

# Visit

the proposed

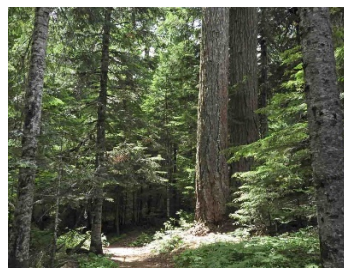
# Douglas-Fir National Monument



Iron Mountain

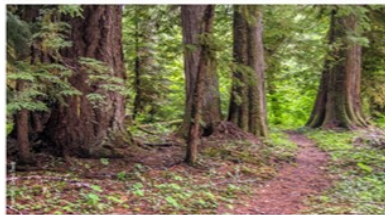


Quartzville Creek



Hiking, Biking, Scenic Drives, Forest Roads are all ways to explore the glories of the wild

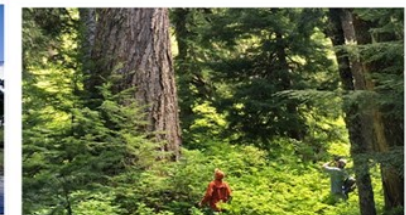
---



Middle Santiam Wilderness



Mt Jefferson Wilderness



Crabtree Valley

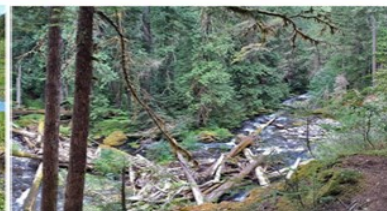
---



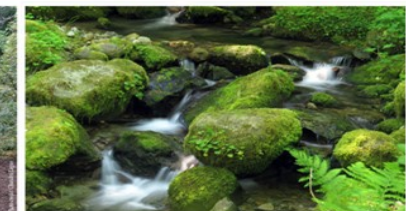
Bachelor Mountain



Gordon Meadow



Breitenbush River



Hidden Waterfalls



# PLAN YOUR VISIT

## To the proposed Douglas-fir National Monument

### SCENIC DRIVES

- Over the River National Scenic Byway
- West Cascades National Scenic Byway
- Quartzville Creek National Backcountry Byway
- McKenzie River National Scenic Byway

### DAY USE AREAS

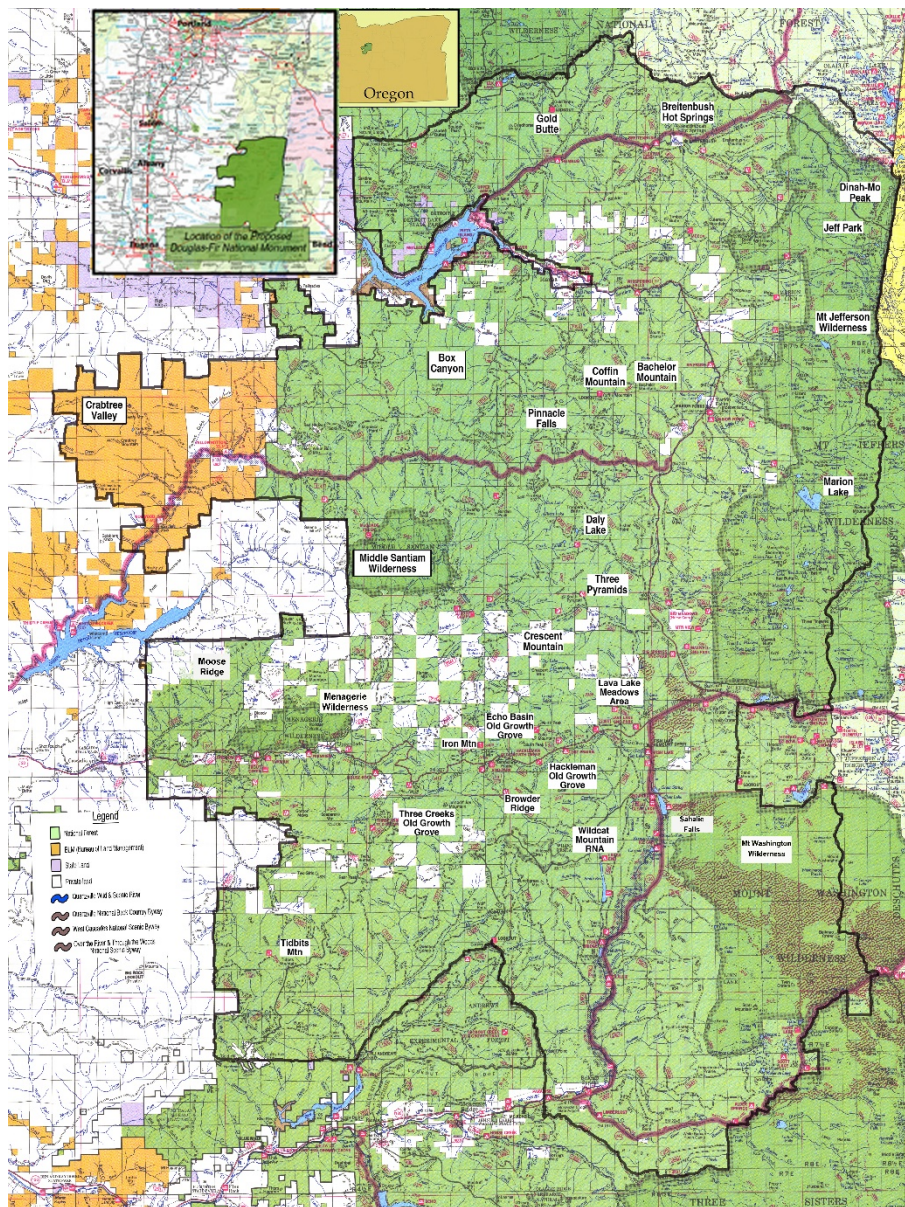
- Dogwood (BLM)
- Yellowbottom (BLM)
- Marion Forks (Detroit Ranger District)
- Upper Arm (Detroit Ranger District)
- Yukwah (Sweet Home Ranger District)
- Fish Lake (McKenzie Ranger District)
- Ice Cap Creek (McKenzie Ranger District)

### HIKING & BACKPACKING

#### Featured Trails

- *Crabtree Valley* - walk among some of the oldest, biggest Douglas-fir trees in Oregon
- *Coffin & Bachelor Mountains* - enjoy expansive views of the high Cascades.
- *Iron Mountain & Browder Ridge* - famous for wildflowers and butterflies in July.
- *Echo Basin* - climb this path to see large Alaska cedar, rare this far south.
- *Crescent Mountain* - ascend this trail till it emerges from the forest into high meadows and dramatic views of surrounding peaks
- *McKenzie River National Recreation Trail* – spectacular views of the River, Blue Pool and Sahalie Falls
- *Clear Lake* – hike around the lake and see the ancient trees at the bottom of the lake

For more, visit  
[www.douglasfirnationalmonument.org/trailindex.html](http://www.douglasfirnationalmonument.org/trailindex.html)



### WILDERNESS

- *Mt Jefferson* - Rugged mountain peak, backcountry lakes, miles of forested trails
- *Middle Santiam* - Old growth, pristine streams
- *Menagerie* - Low elevation, accessible year-round featuring spires popular with serious rock climbers
- *Mount Washington* – Mature forests and some of Oregon's newest lava fields

### CAMPING

#### Detroit Ranger District - Campgrounds

Breitenbush, Cove Creek, Hoover, Piety Island (access by boat only) Santiam Flats, Southshore, Humbug, Marion Forks, Riverside, Elk Lake, Whispering Falls, Gold Butte Lookout (Cabin rental), Cleator Bend (Group), Cove Creek (Group), Hoover (Group), Fox Creek (Group), Big Meadows (Horse Camp)

#### Sweet Home District - Campgrounds

House Rock, Trout Creek, Yukwah, Fernview Group Campground, Longbow (Organization Camp), Seven Mile (Horse Camp), South Pyramid (Horse Camp), Yellowbottom (BLM), Lost Prairie (individual & group camping)

#### McKenzie Ranger District

Scott Lake, Alder Springs, Limberlost, Paradise, Olallie, Trail Bridge, Ice Cap, Coldwater Cove, Fish Lake, Lakes End

### DEDICATED OLD-GROWTH GROVES

Three Creeks  
Echo Basin  
Hackleman  
Millennial (Gordon Lakes)  
Menagerie Wilderness  
Middle Santiam  
Several more

#### *Breitenbush Hot Springs Resort*

This private resort features lodging, organic meals, workshops, retreats, hot spring pools and more. Call (503) 854-3320 or go online to breitenbush.com.